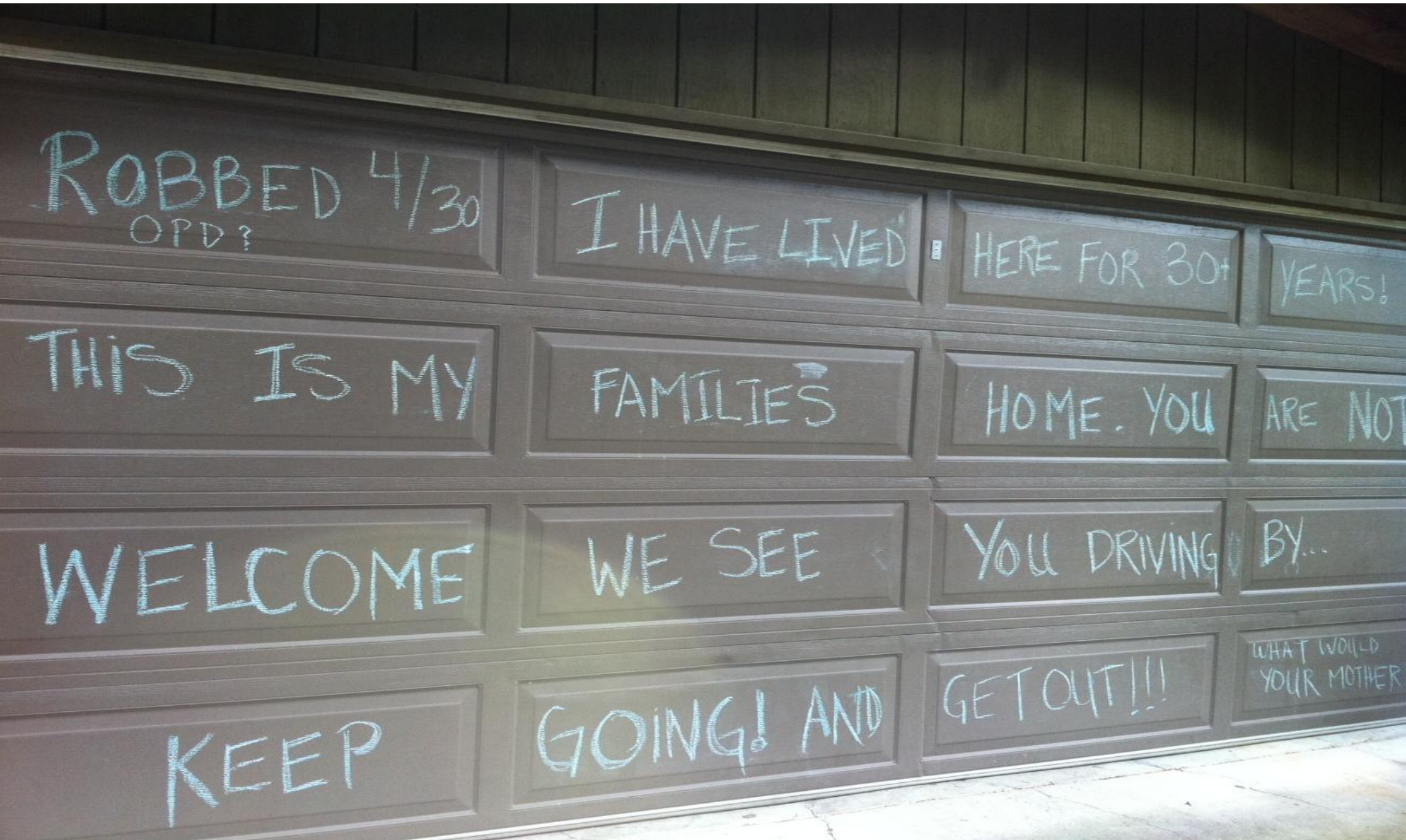


D4 Crime Town Hall



Councilmember Libby Schaaf, D4

&

OPD Chief Howard Jordan

Montclair Elementary School
March 28, 2012



Libby Schaaf
Councilmember, District 4

City of Oakland, CA

Agenda

Objectives: To introduce Oakland’s new Police Chief Howard Jordan to this community; (2) Provide an overview of crime issues from the Councilmember’s and Chief’s perspectives; and (3) Give citizens the opportunity to have their questions and concerns addressed.

Introduction – Councilmember Libby Schaaf

7:00 -7:30 pm

- Meeting overview: Focus on hills neighborhoods & burglaries
- What we’re hearing – frustration & fear
- Review of Crime Stats & Trends

Meet Chief Howard Jordan

7:30 – 8:00 pm

- Introduction and Vision for a Safer Oakland
- Overview of Burglary Reduction Strategy by Captain Jeff Israel

Questions & Concerns from Audience

8:00 – 9:00 pm

- Please limit initial questions/comments to 2 minutes until everyone has had an opportunity to speak.
- Responses will be given as needed.



Disclaimer

These data are drawn from the Oakland Police Department database, and they are unaudited. The numbers do not match the official monthly totals reported to the FBI through the Uniform Crime Reporting (UCR) program.

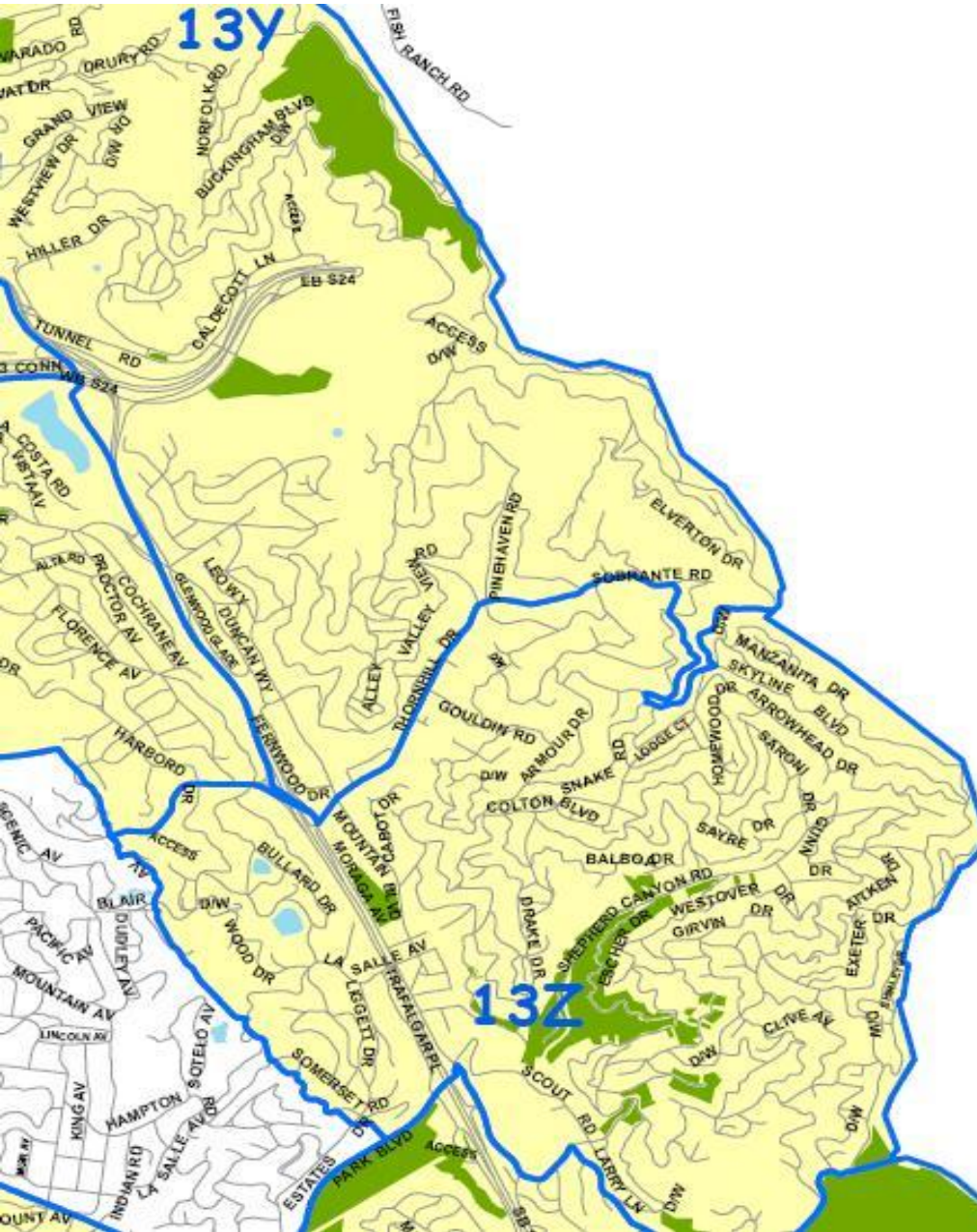
Exact counts of crimes by beat or bureau are not possible. Actual counts will usually range from 2 to 10 percent higher.

Because both reporting of crimes and data entry can run behind, not all crimes have been recorded yet.

The only certified statistics are those contained in the UCR.

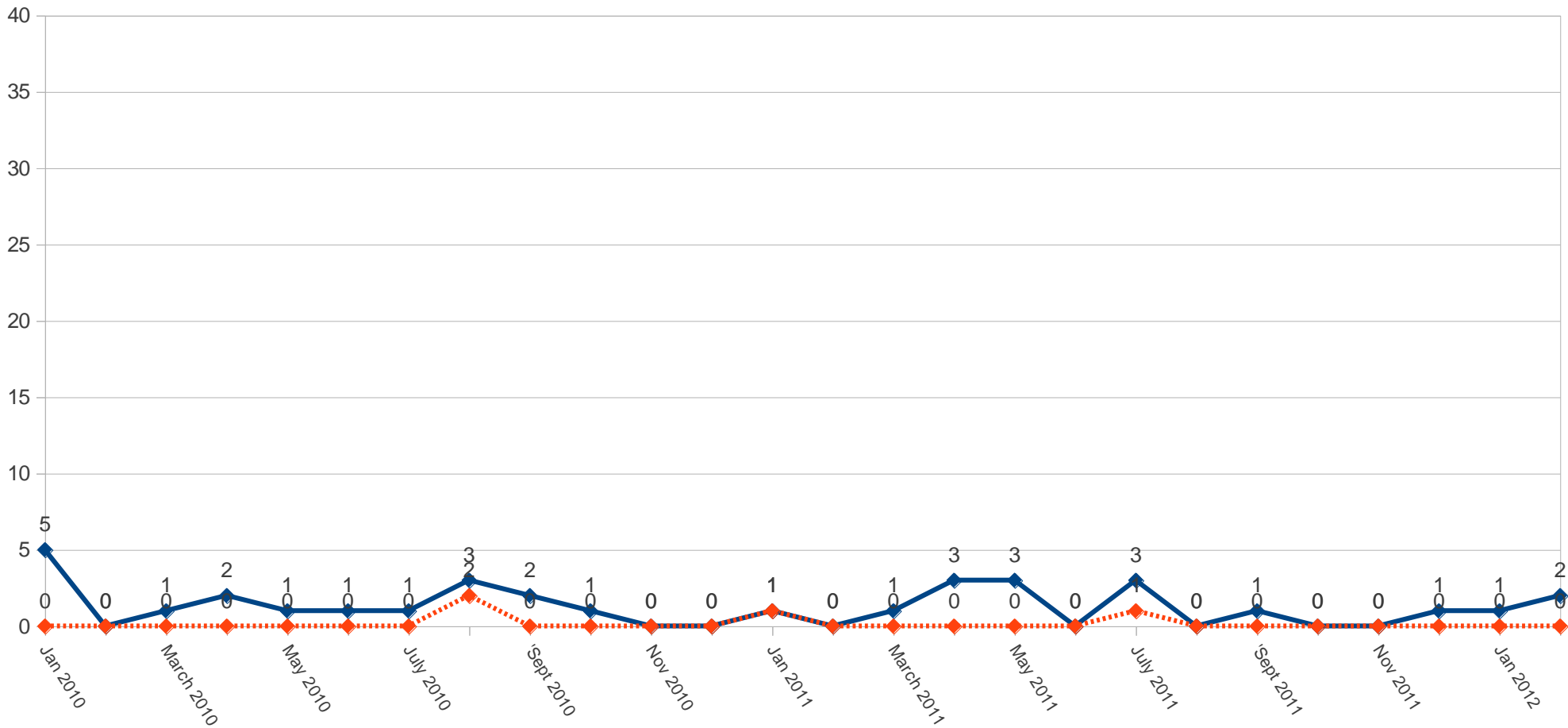


13Y – Claremont Hills, Merriwood, Hiller Highlands



13Y Violent Crimes

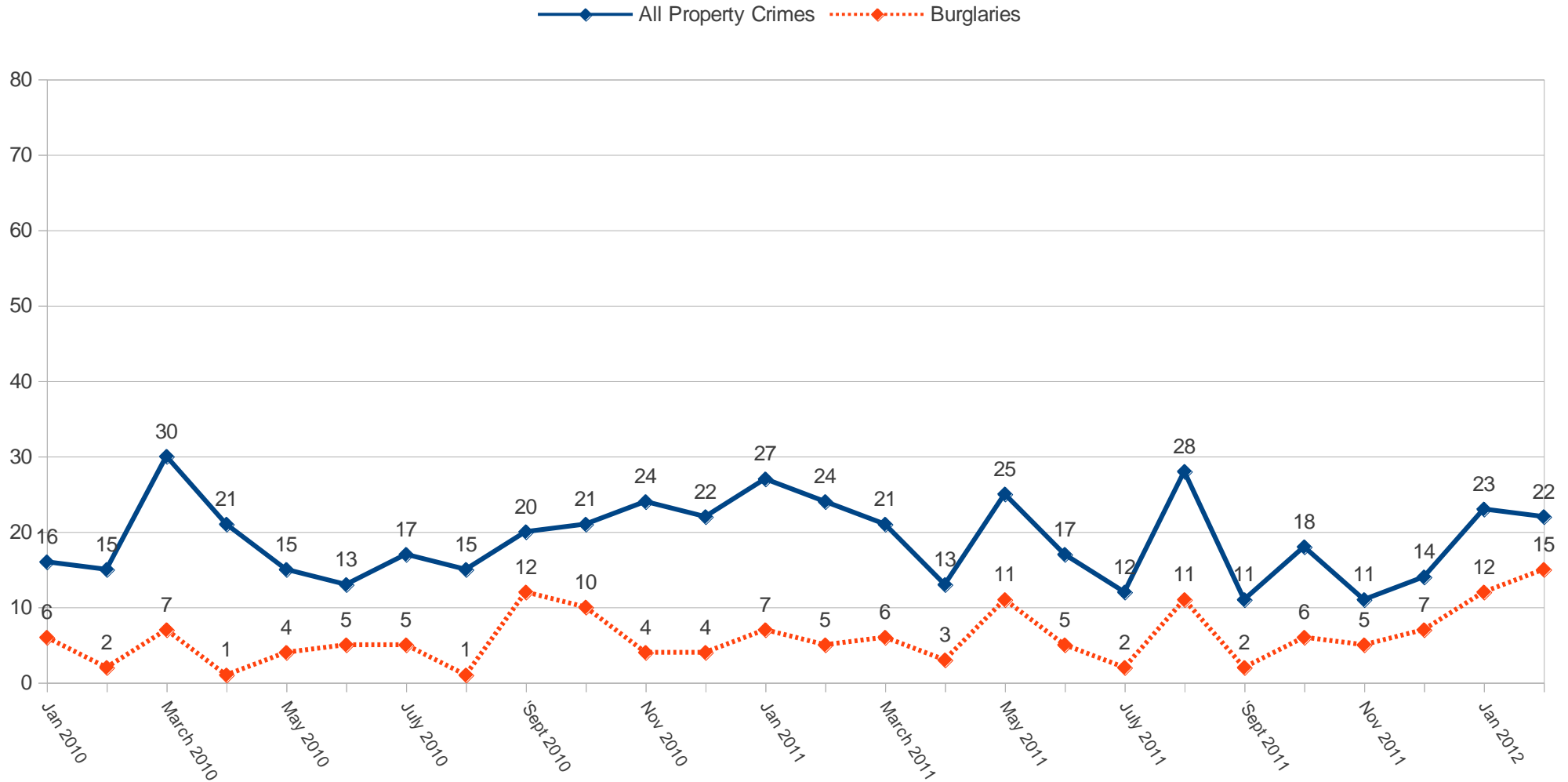
—◆— All Violent Crimes -.-◆-.- Robberies



Violent Crimes: Murder, Robbery, Simple Assault, Aggravated Assault

Source: <http://gismaps.oaklandnet.com/crimewatch/CWTabular.asp> and <http://oakland.crimespotting.org>

13Y Property Crimes

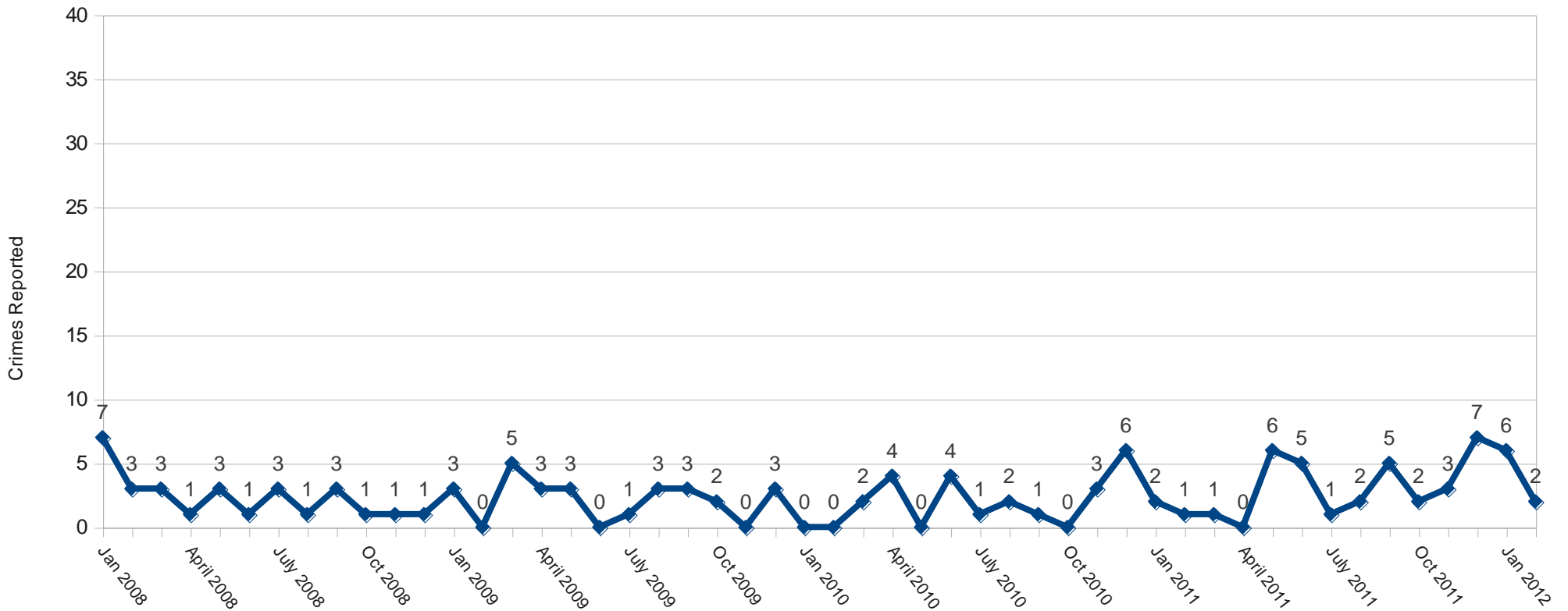


Property Crimes: Theft, Vehicle Theft, Burglary, Vandalism and Arson
Source: <http://gismaps.oaklandnet.com/crimewatch/CWTabular.asp>
and <http://oakland.crimespotting.org>

13Y Stats

- Year-to-date Burglaries have doubled or INCREASED 125% over last year (12 in Jan+Feb 2011 compared to 27 in Jan+Feb 2012)
- Burglaries in the last 6 months have INCREASED 12% over the prior 6 months (76 from 9/11-2/12 compared to 85 from 3/11-8/11)
- Burglaries during the last year have INCREASED 29% from the prior year (85 from 2/11-2/12 compared to 66 from 2/10-2/11)
- Burglaries in the 5 months after the June 2010 OPD lay-offs have INCREASED 60% compared to 5 months prior (20 from 1/10-5/10 compared to 32 from 6/10 to 10/10)

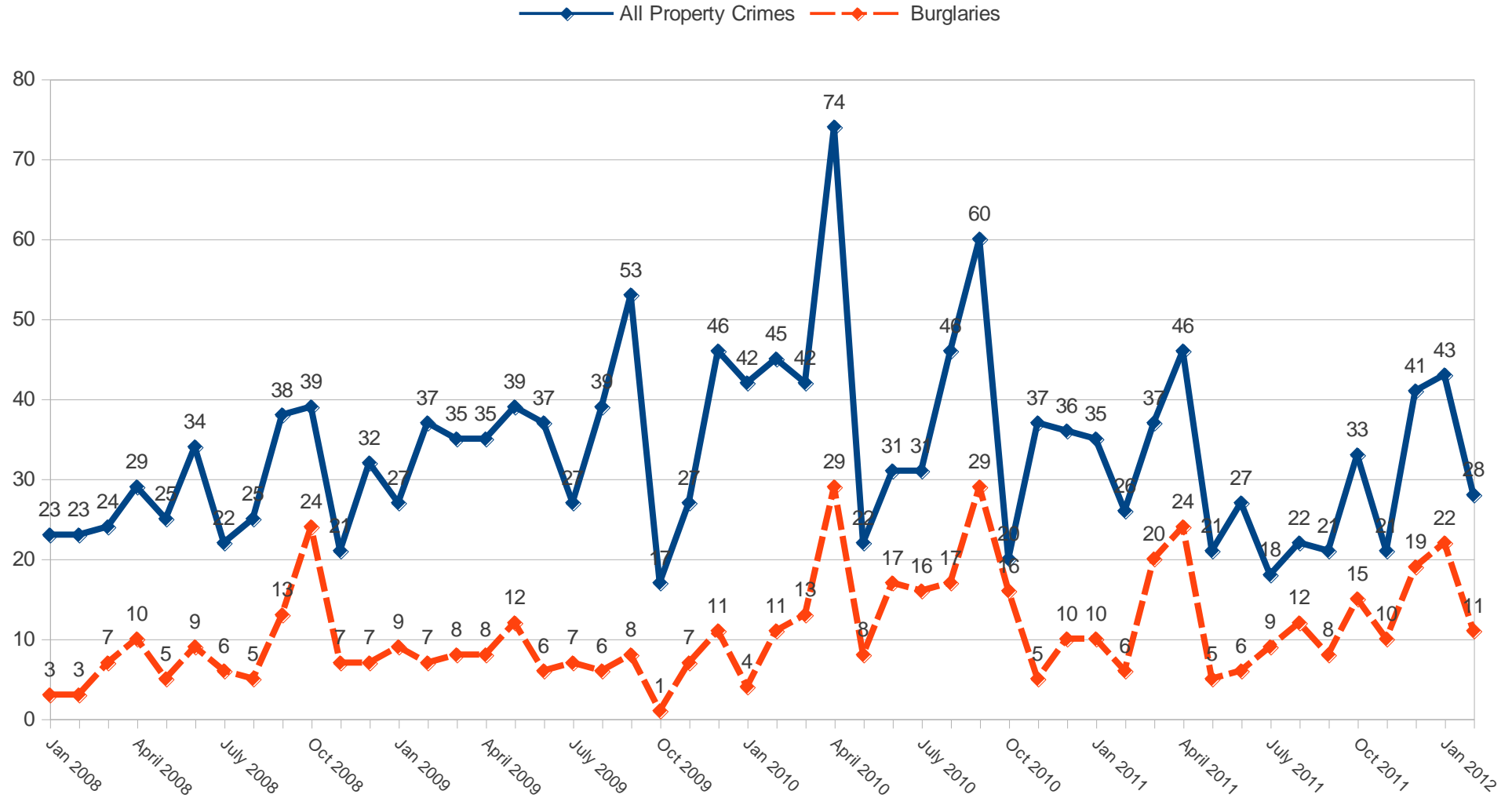
13Z Violent Crimes



Violent Crimes: Murder, Robbery, Simple Assault, Aggravated Assault

Source: <http://gismaps.oaklandnet.com/crimewatch/CWTabular.asp> and <http://oakland.crimespotting.org>

13Z Property Crimes



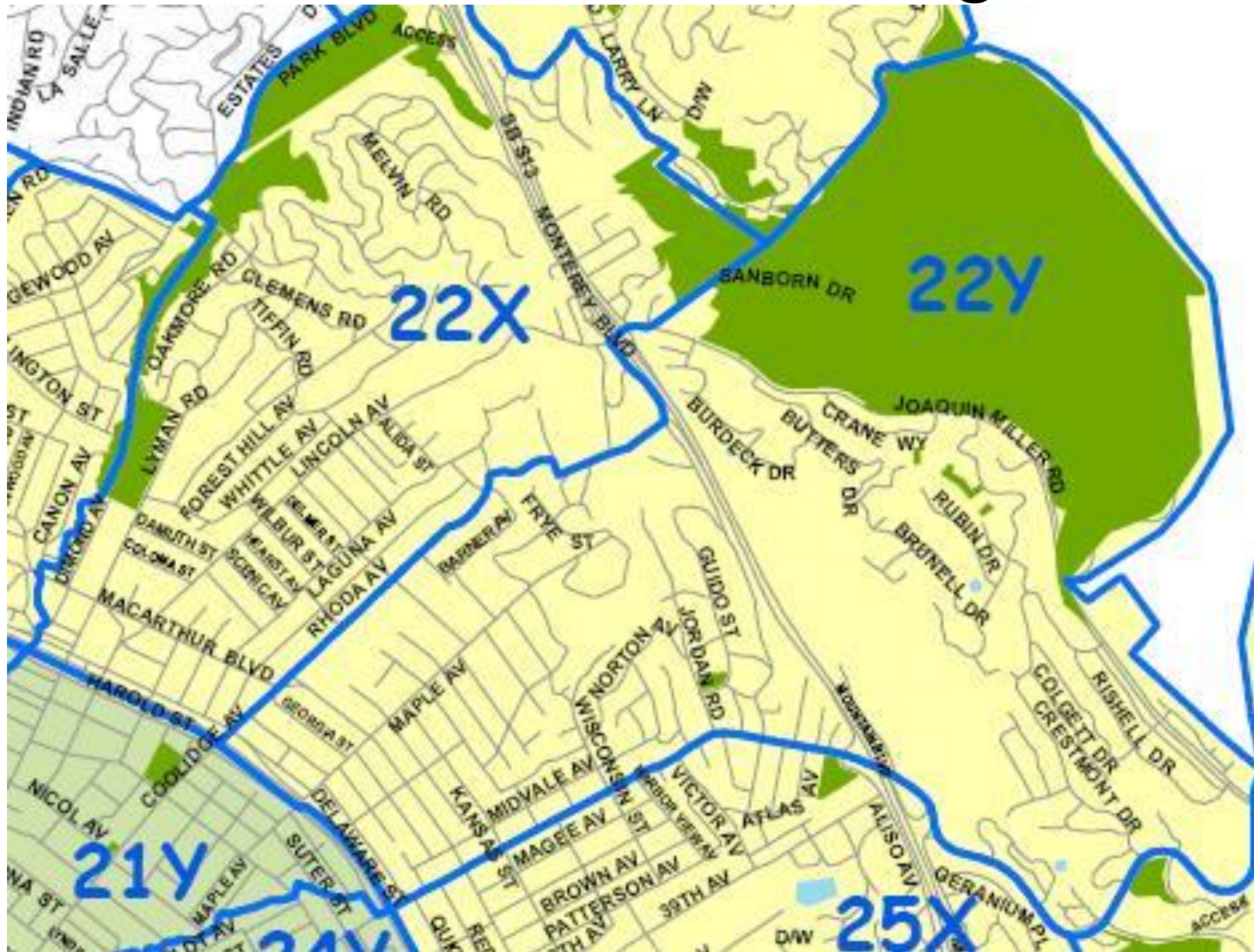
Property Crimes: Theft, Vehicle Theft, Burglary, Vandalism and Arson

Source: <http://gismaps.oaklandnet.com/crimewatch/CWTabular.asp> and <http://oakland.crimespotting.org>

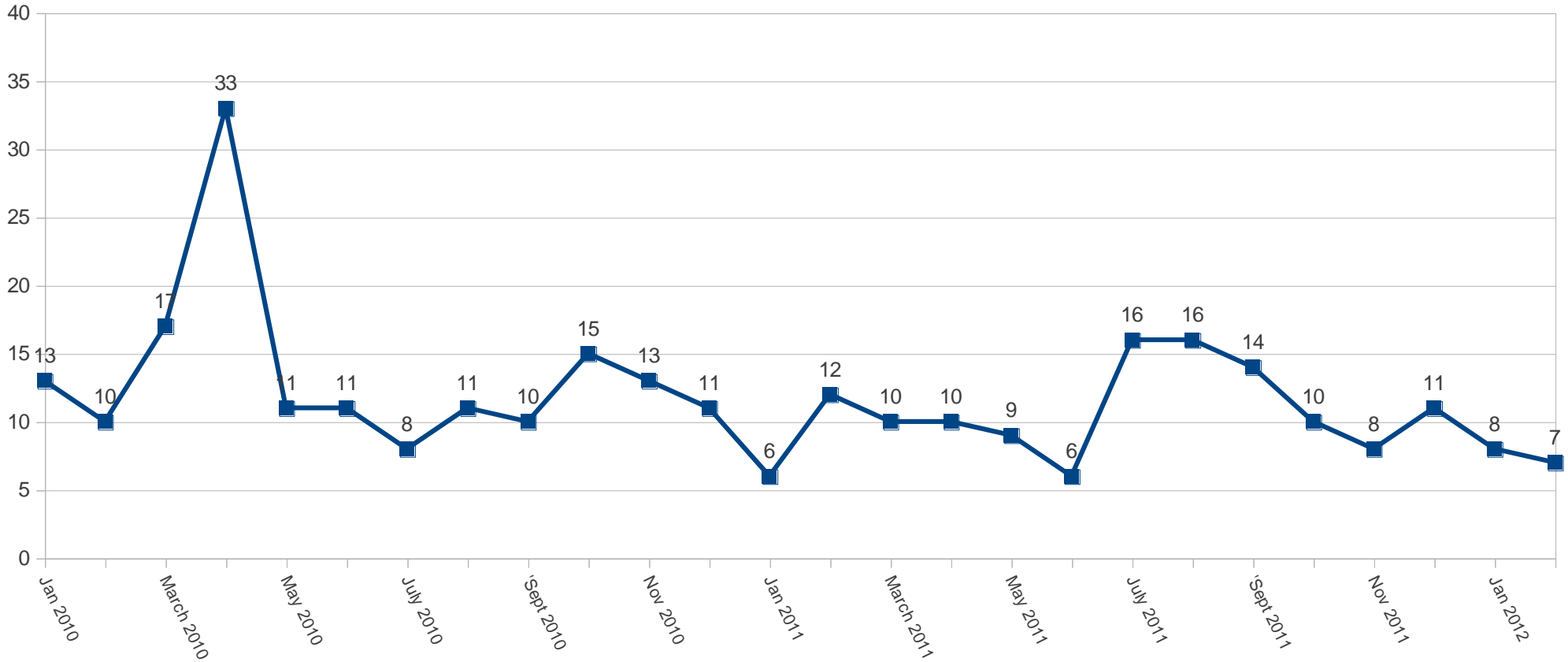
13Z Stats

- Year-to-date Burglaries have doubled or INCREASED 106% over last year (16 in Jan+Feb 2011 compared to 33 in Jan+Feb 2012)
- Burglaries in the last 6 months have INCREASED 12% over the prior 6 months (76 from 9/11-2/12 compared to 85 from 3/11-8/11)
- Burglaries during the last year have DECREASED 8.5% from the prior year (161 from 3/11-2/12 compared to 176 from 3/10-2/11)
- Burglaries in the 21 months after the June 2010 OPD lay-offs have INCREASED 39% compared to 21 months prior (206 from 9/08-5/10 compared to 287 from 6/10 to 2/12)

22X - Dimond, Oakmoore, Woodminster, Lincoln Highlands

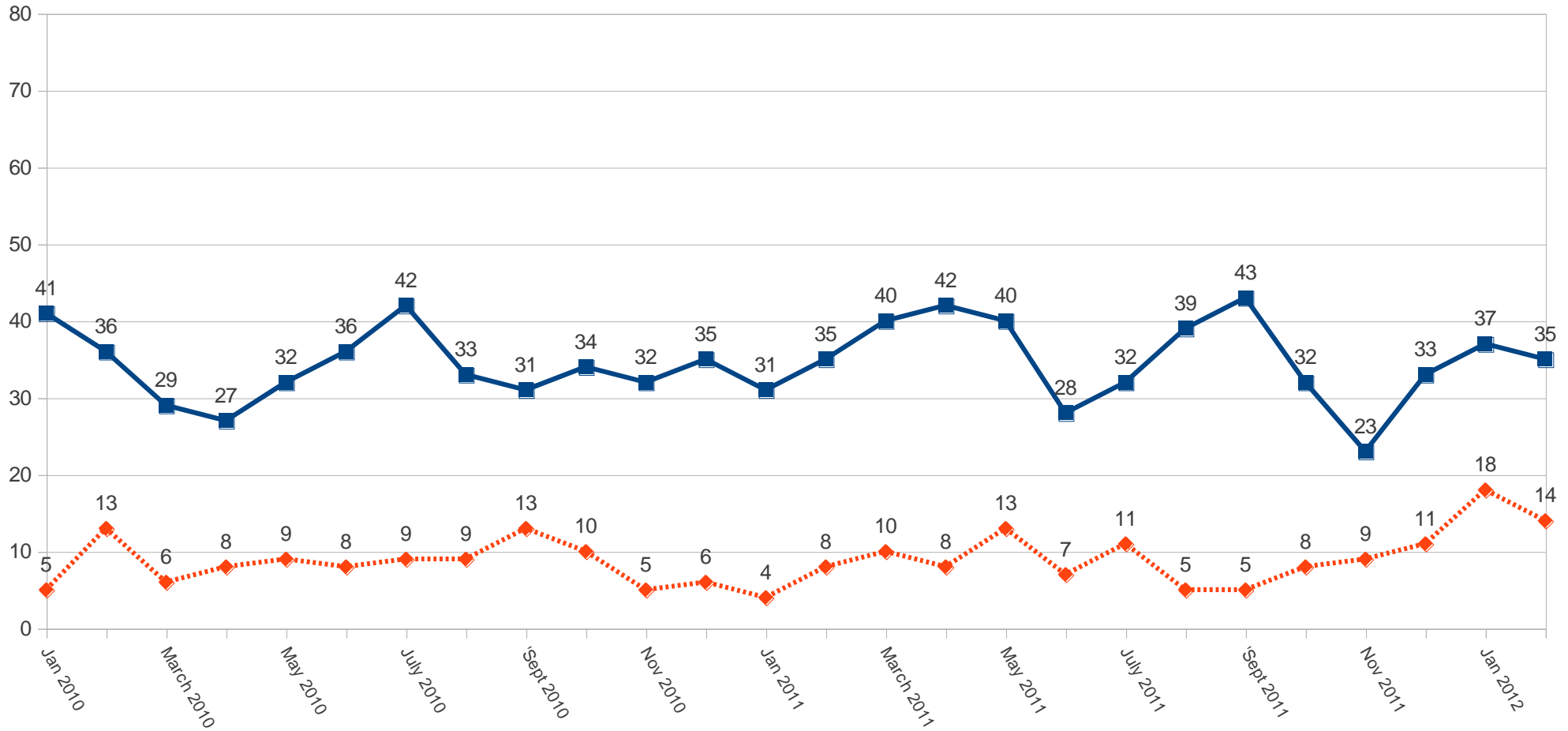


22X Violent Crimes



Violent Crimes: Murder, Robbery, Simple Assault, Aggravated Assault
Source: <http://gismaps.oaklandnet.com/crimewatch/CWTabular.asp> and
<http://oakland.crimespotting.org>

22X Property Crimes

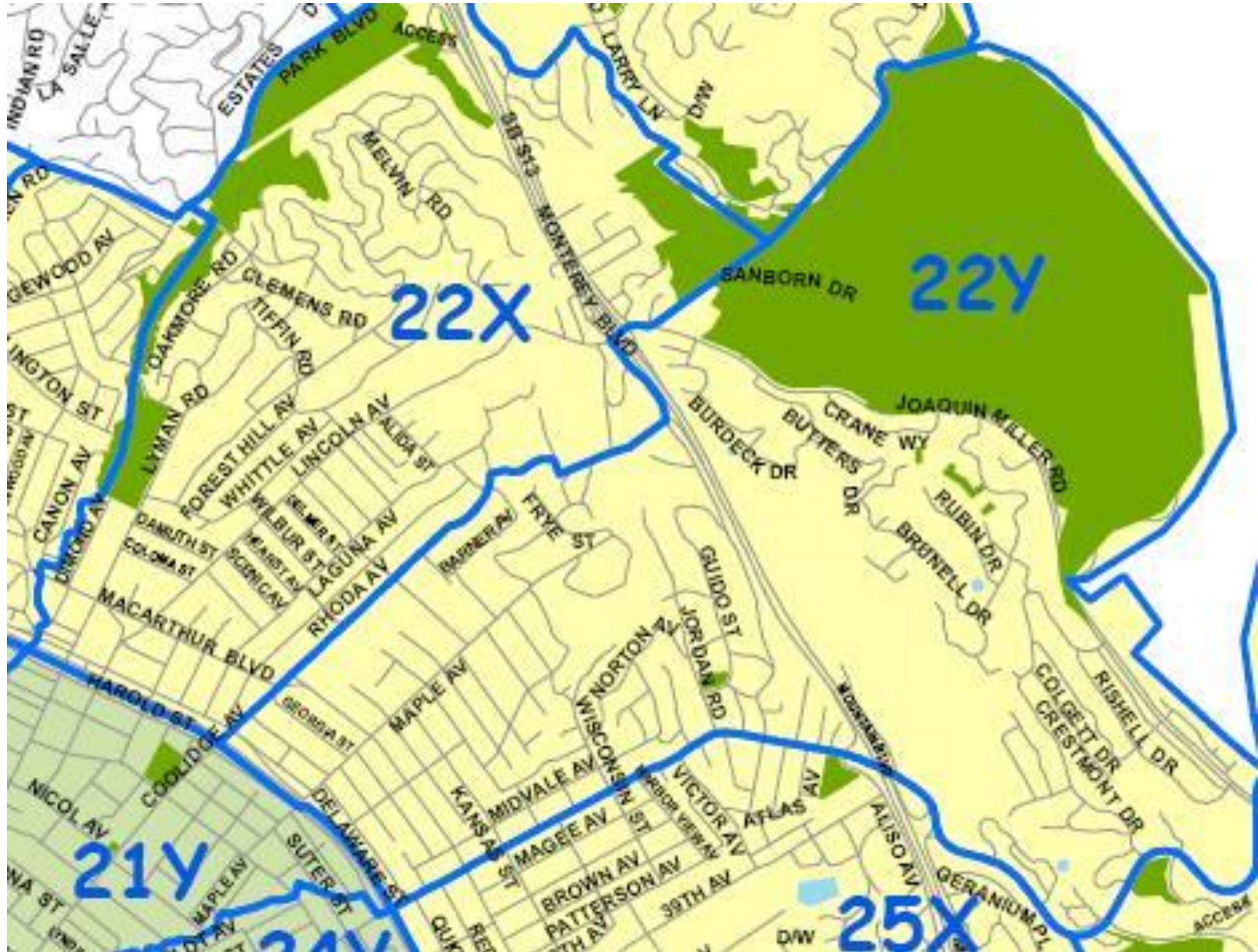


Property Crimes: Theft, Vehicle Theft, Burglary, Vandalism and Arson
Source: <http://gismaps.oaklandnet.com/crimewatch/CWTabular.asp>
and <http://oakland.crimespotting.org>

22X Stats

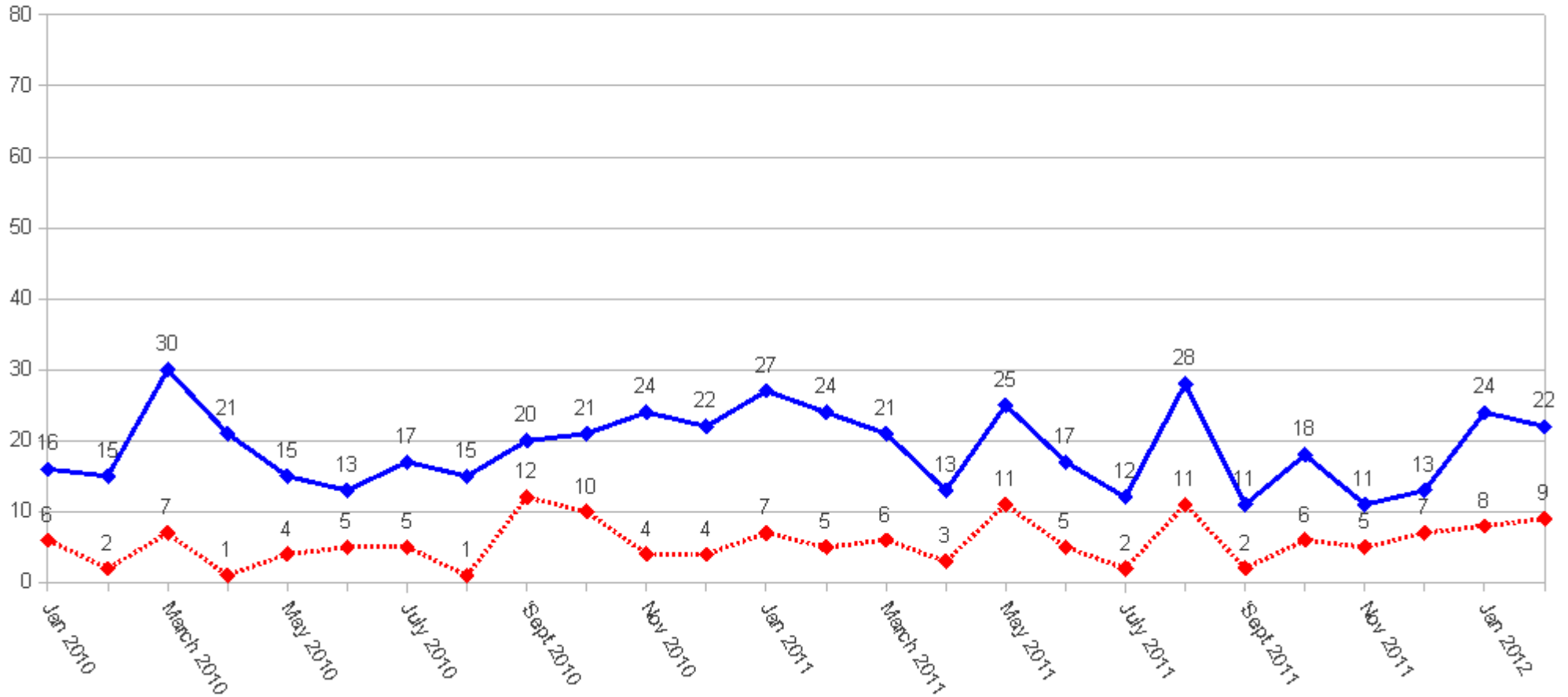
- Year-to-date Burglaries have INCREASED 166% over last year (12 in Jan+Feb 2011 compared to 32 in Jan+Feb 2012)
- Burglaries in the last 6 months have INCREASED 5% over the prior 6 months (65 from 9/11-2/12 compared to 62 from 3/11-8/11)
- Burglaries during the last year have DECREASED 18% 8.6 to 9.2 up 7% 20 21 after from the prior year (108 from 2/11-2/12 compared to 127 from 2/10-2/11)
- Burglaries in the 20 months after the June 2010 OPD lay-offs have INCREASED 1.6% compared to 21 months prior (180 from 9/08-5/10 compared to 183 from 6/10 to 2/12)

22Y – Crestmont, Joaquin Miller, Bret Harte, Laurel



22Y Violent Crimes

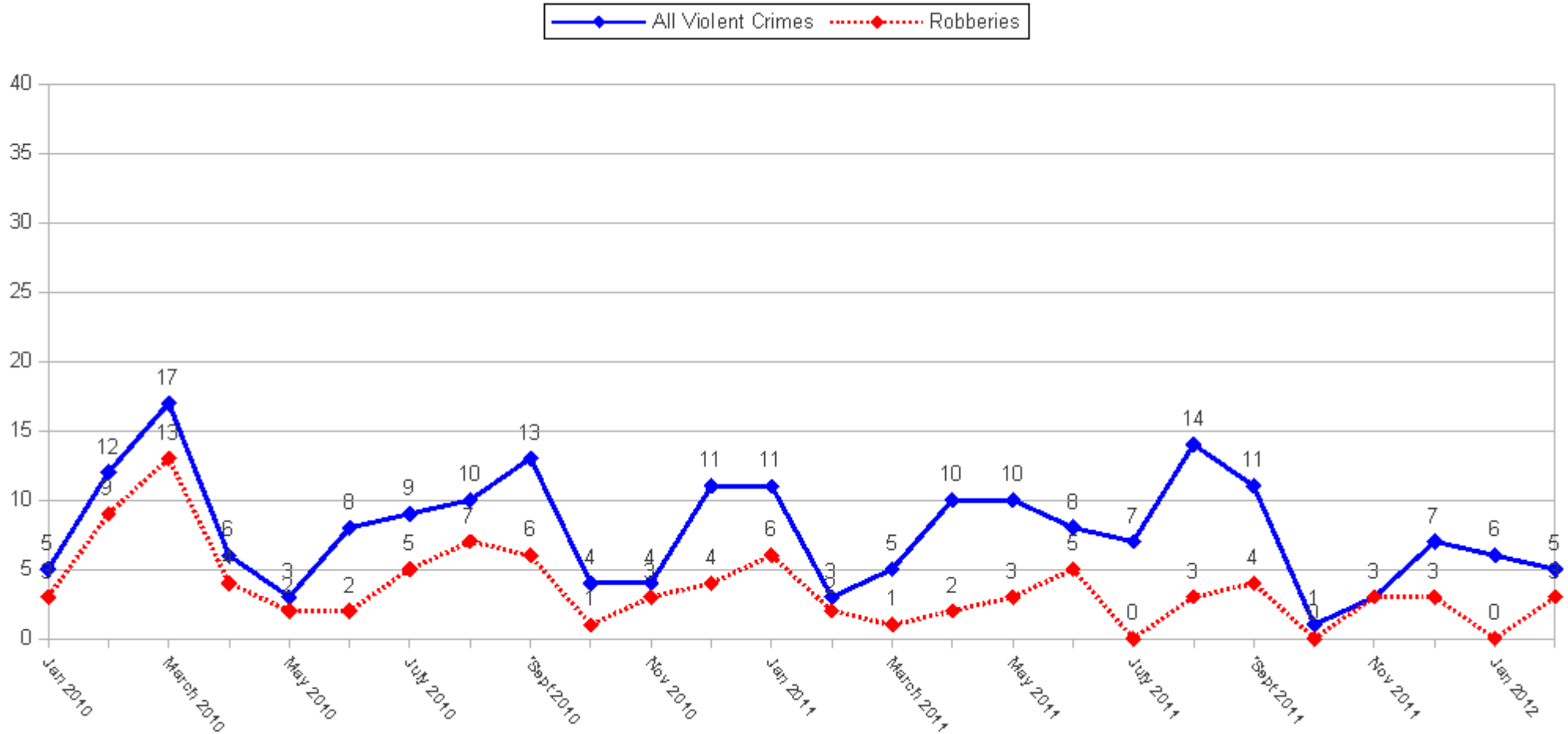
—◆— All P Crimes -.-◆-.- Burglaries



Violent Crimes: Murder, Robbery, Simple Assault, Aggravated Assault

Source: <http://gismaps.oaklandnet.com/crimewatch/CWTabular.asp> and <http://oakland.crimespotting.org>

22Y Property Crimes

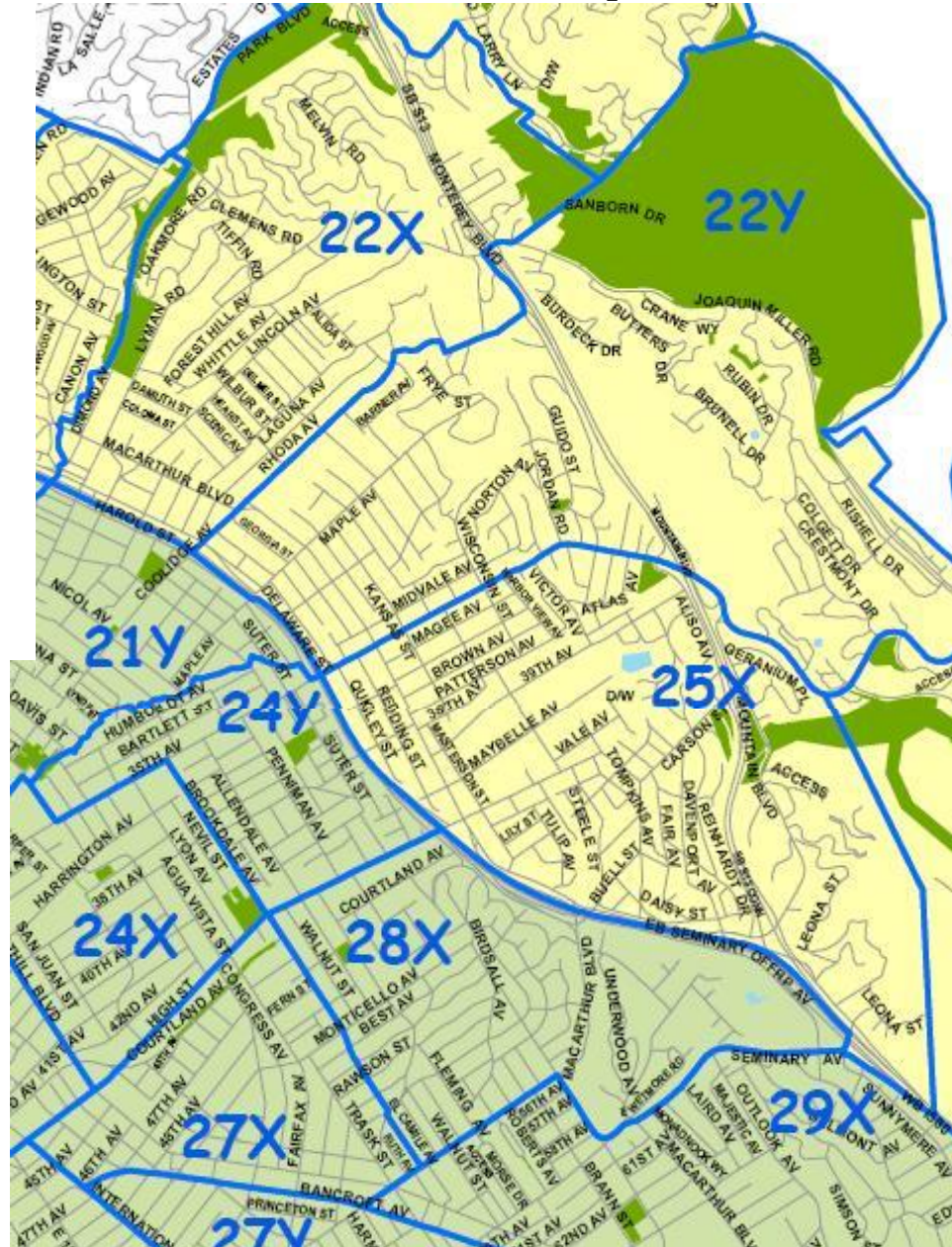


Property Crimes: Theft, Vehicle Theft, Burglary, Vandalism and Arson
Source: <http://gismaps.oaklandnet.com/crimewatch/CWTabular.asp>
and <http://oakland.crimespotting.org>

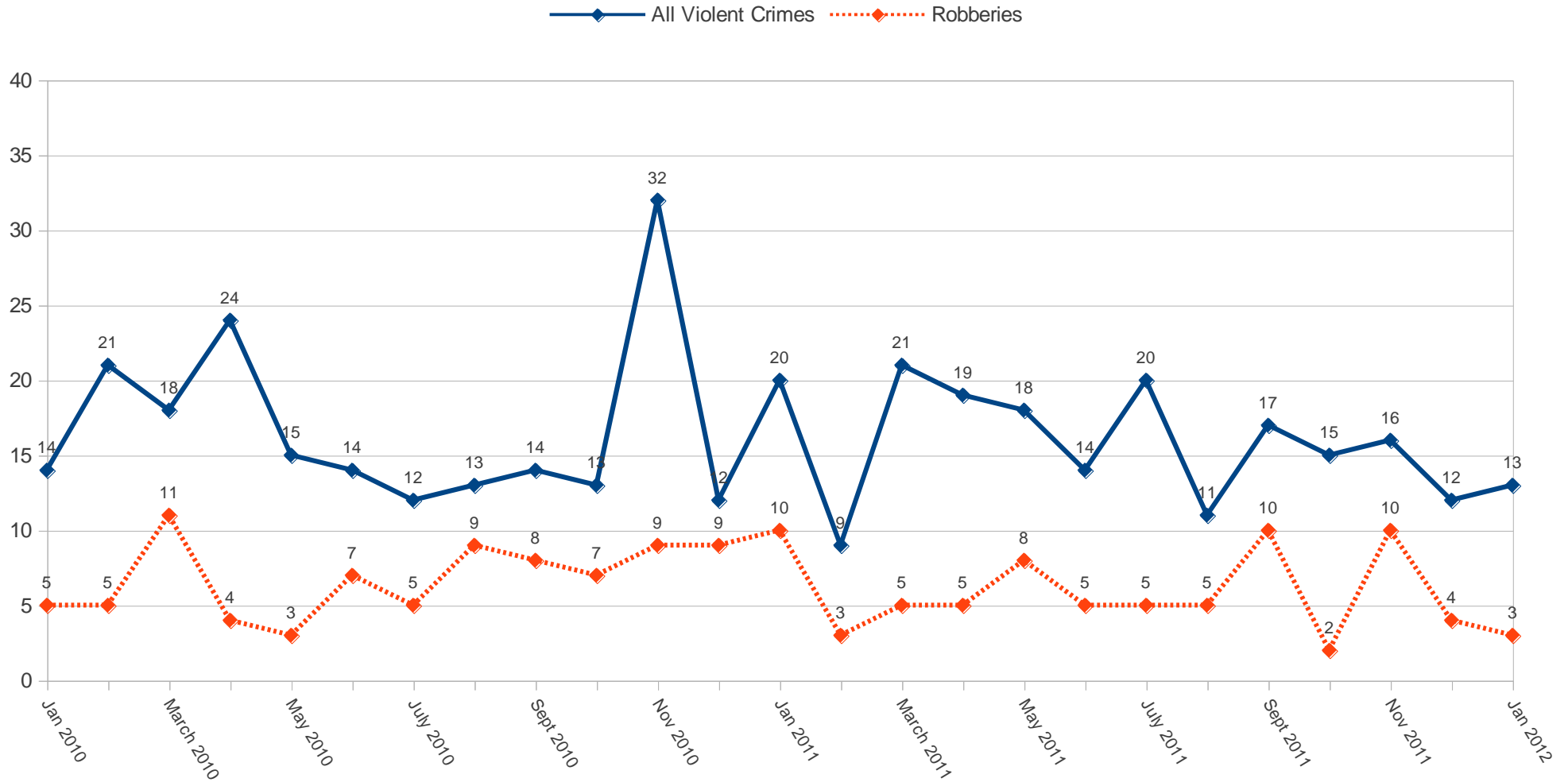
22Y Stats

- Year-to-date Burglaries have INCREASED 44% over last year (17 in Jan+Feb 2012 compared to 12 in Jan+Feb 2011)
- Burglaries in the last 6 months have DECREASED 14% over the prior 6 months (76 from 9/11-2/12 compared to 85 from 3/11-8/11)
- Burglaries during the last year have INCREASED 23% from the prior year (75 from 2/11-2/12 compared to 61 from 2/10-2/11)
- Burglaries in the 20 months after the June 2010 OPD lay-offs have DECREASED 40% compared to 21 months prior (205 from 9/08-5/10 compared to 123 from 6/10 to 2/12)

25X – Redwood Heights, Laurel, Davenport



25X Violent Crimes

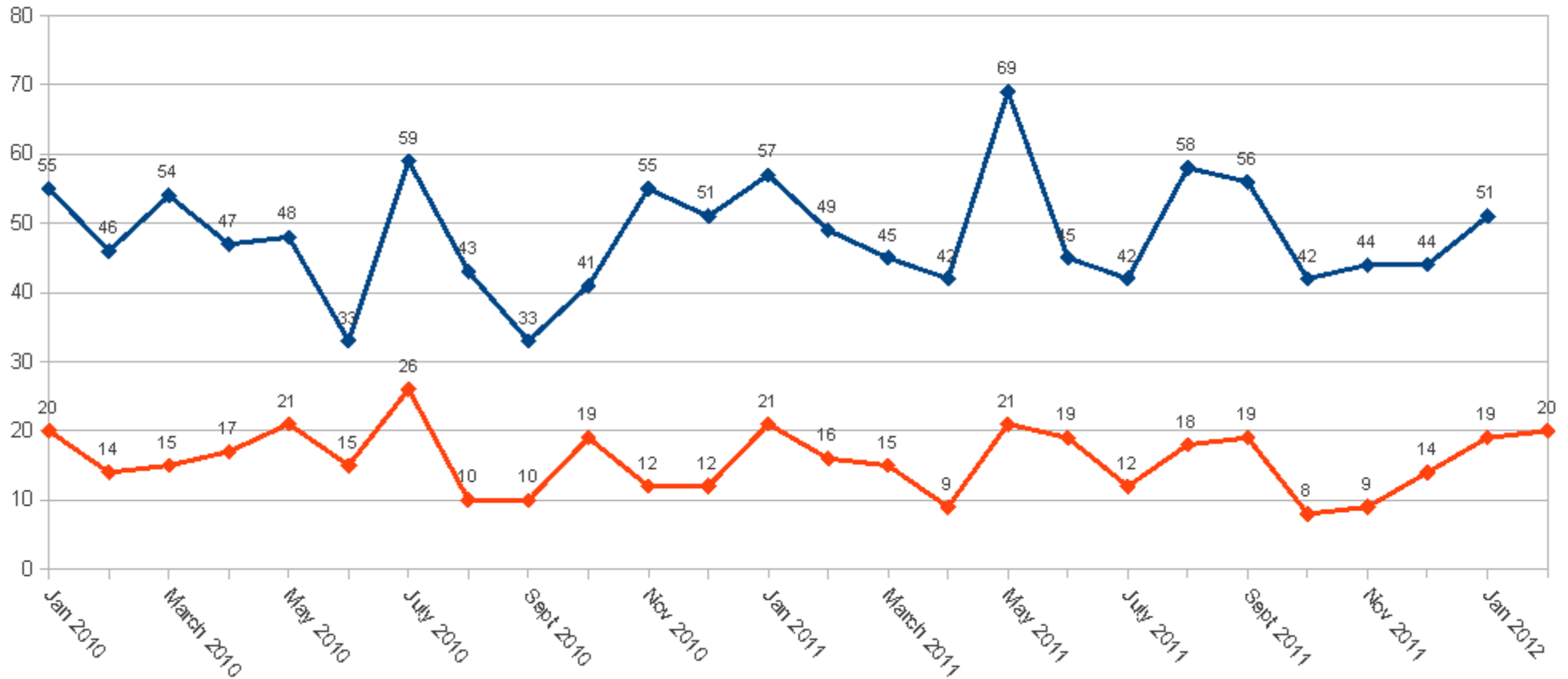


Violent Crimes: Murder, Robbery, Simple Assault, Aggravated Assault

Source: <http://gismaps.oaklandnet.com/crimewatch/CWTabular.asp> and <http://oakland.crimespotting.org>

25X Property Crimes

◆ All Property Crimes ◆ Burglaries

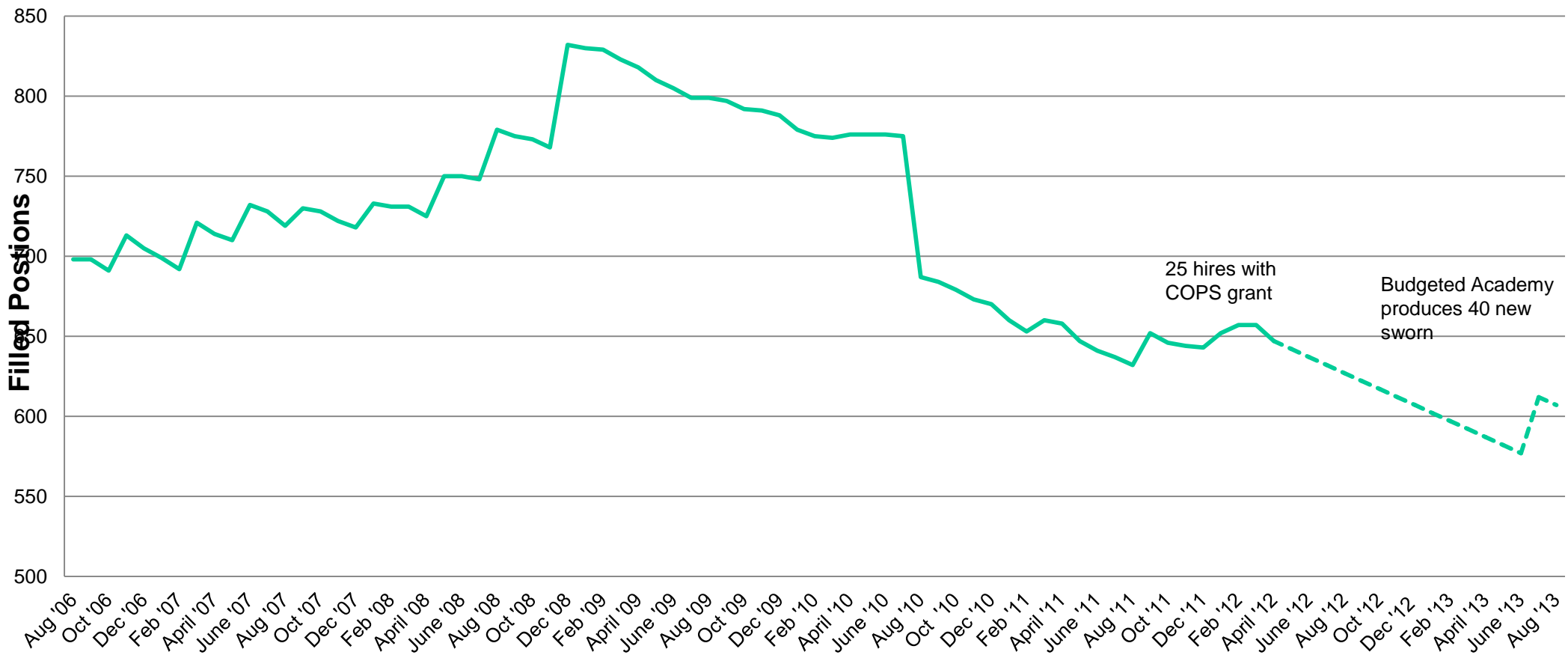


Property Crimes: Theft, Vehicle Theft, Burglary, Vandalism and Arson
Source: <http://gismaps.oaklandnet.com/crimewatch/CWTabular.asp>
and <http://oakland.crimespotting.org>

25X Stats

- Year-to-date Burglaries are UNCHANGED over last year (33 in Dec+Jan 2011 compared to 33 in Dec+Jan 2012)
- Burglaries in the last 6 months have DECREASED 6% over the prior 6 months (87 from 8/11-1/12 compared to 92 from 2/11-7/11)
- Burglaries during the last year have DECREASED 7% from the prior year (179 from 2/11-2/12 compared to 192 from 2/10-2/11)
- Burglaries in the 20 months after the June 2010 OPD lay-offs have INCREASED 3% compared to 21 months prior (300 from 9/08-5/10 compared to 309 from 6/10 to 2/12)

Oakland Police Department Actual Sworn Staffing July 2006 - Mar 2012, Projected Staffing Mar 2012 - Aug 2013



**3 Police Academies
Every 2 Years
to Keep Current Levels of
Our police Here**



Questions?

- Please limit initial questions/comments to 2 minutes until everyone has had an opportunity to speak.
- Responses will be given as needed.

