



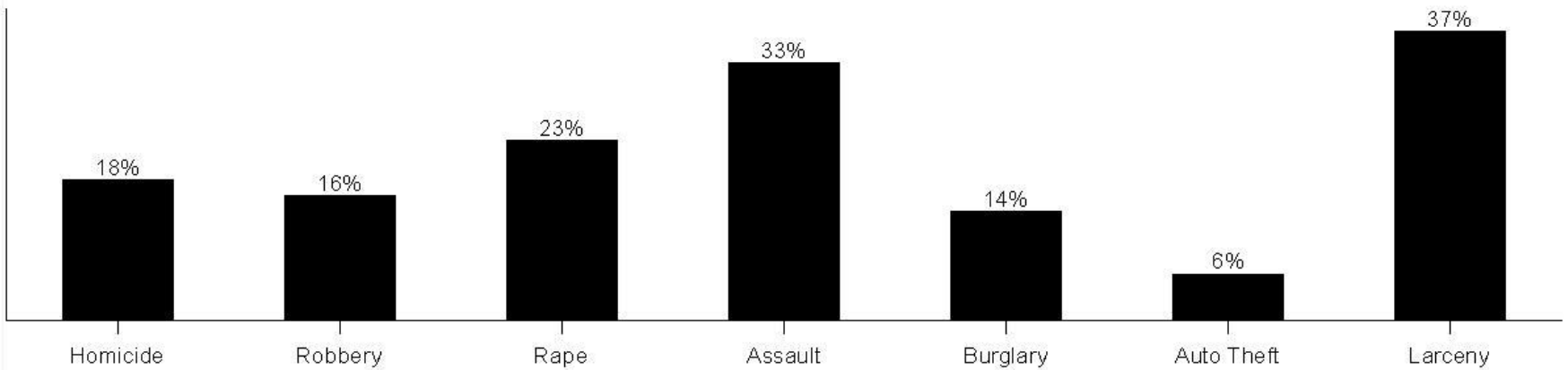
What New York Teaches about American Crime and Its Control

Professor Franklin E. Zimring
Berkeley Law, University of California

St. Lawrence O'Toole Church
Oakland, CA * October 23, 2011



Figure 1. New York City Crime Rate in 2009 as Percentage of 1990 Rate, Seven Index Offenses.



Source: New York City Police Department.



Figure 1.7. New York City Homicides per 100,000, 1985-2008.

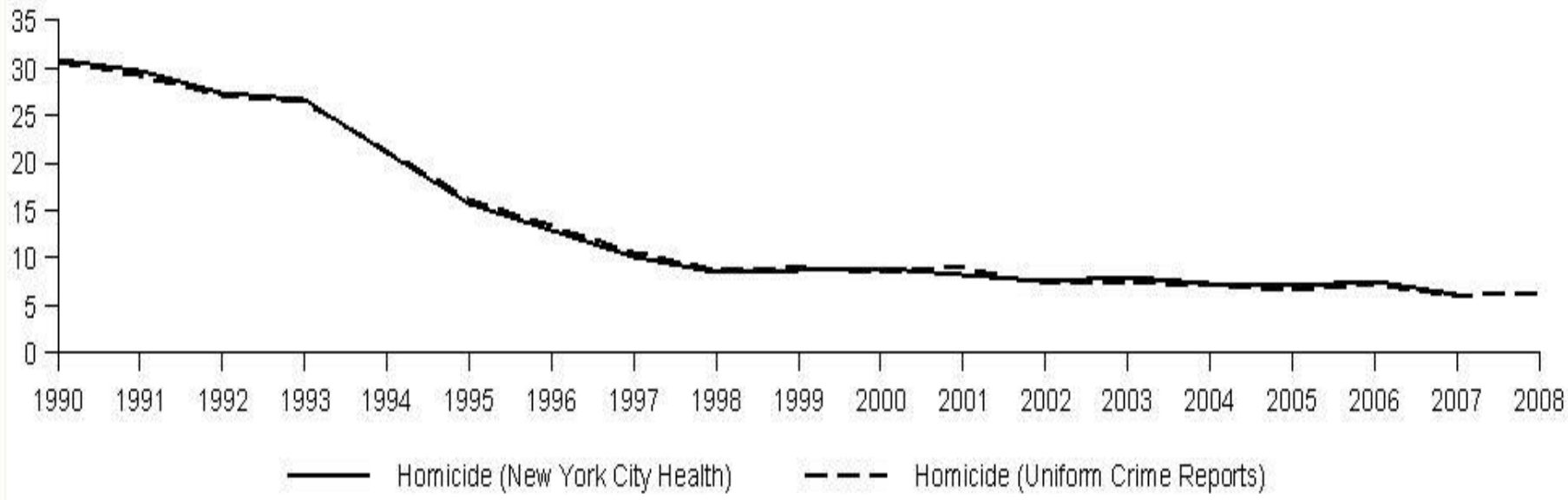
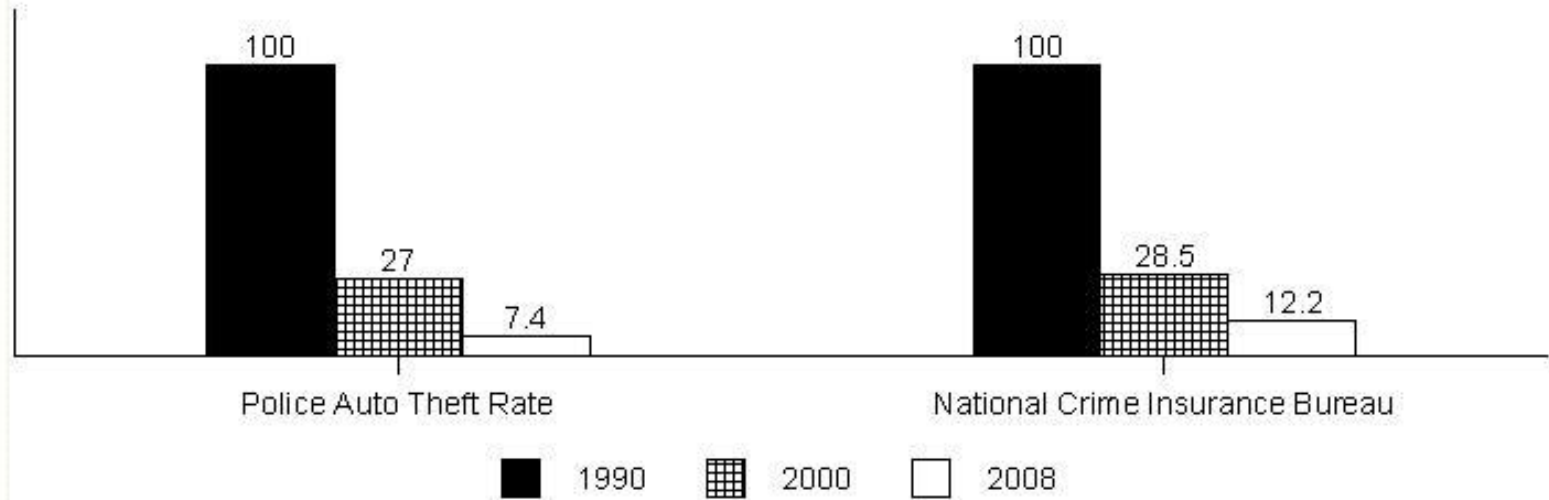


Figure 1.8. Time Trends in Police Reports of Auto Theft and Reported Auto Theft Insurance Claims.

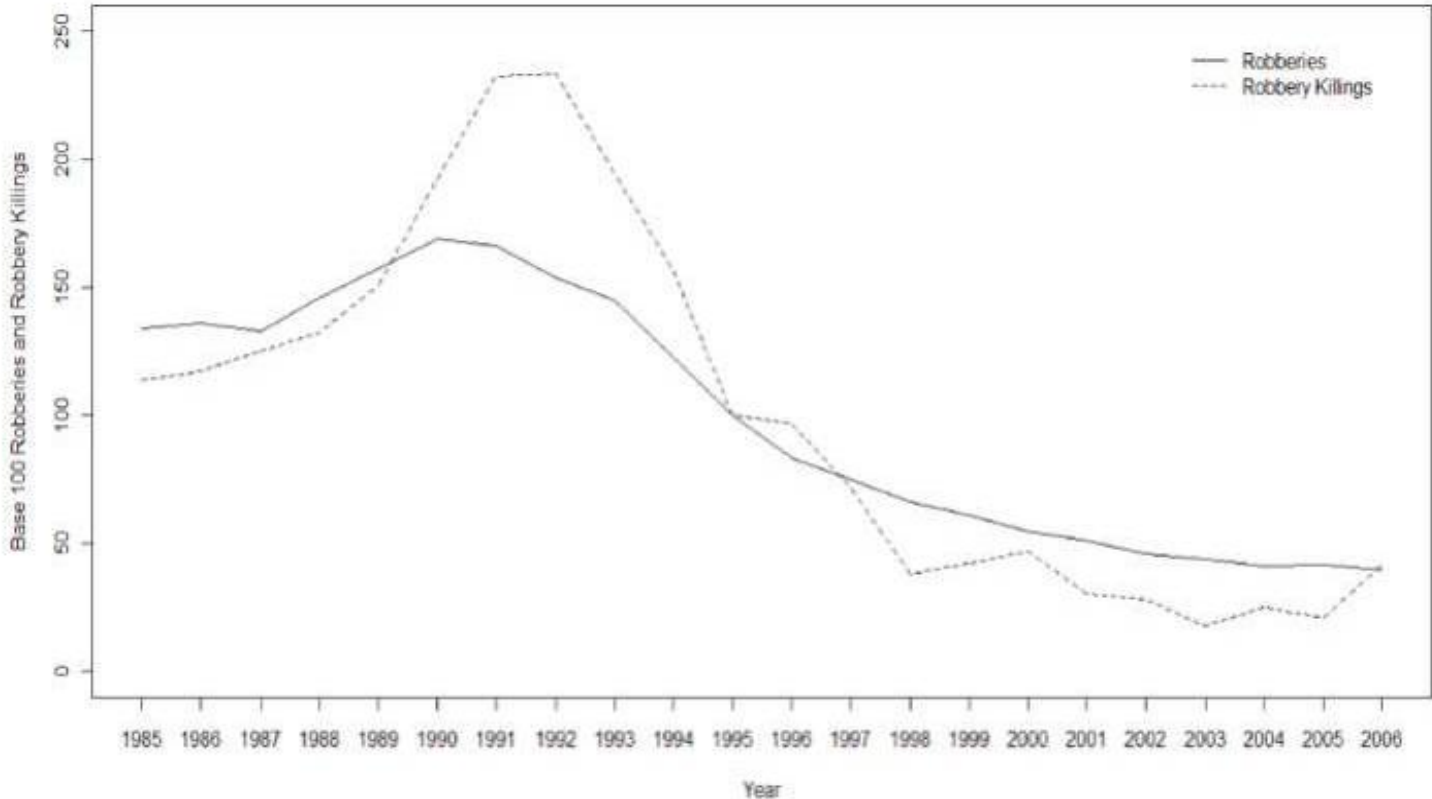


Notes: Police, 1990 = 2009 per 100,000; NCIB 1990 = 13,000 claims reported.

Source: Police, Federal Bureau of Investigation; Insurance claims, National Crime Insurance Bureau.



NYC Base 100 (1995) Robberies and Robbery Killings

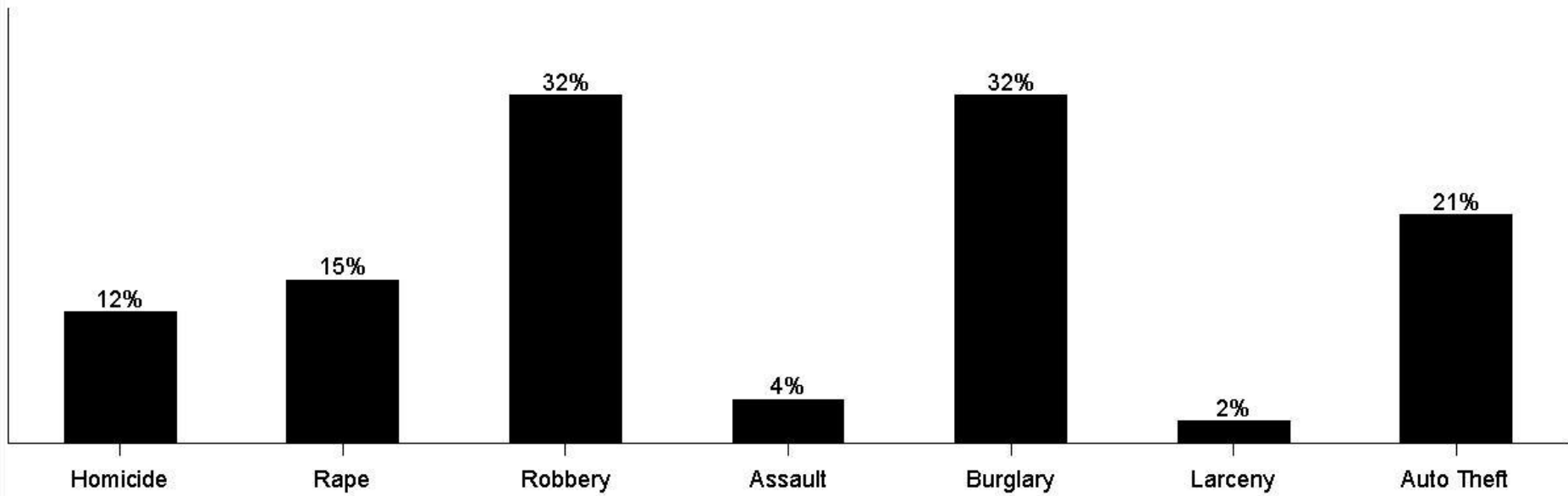


Source:



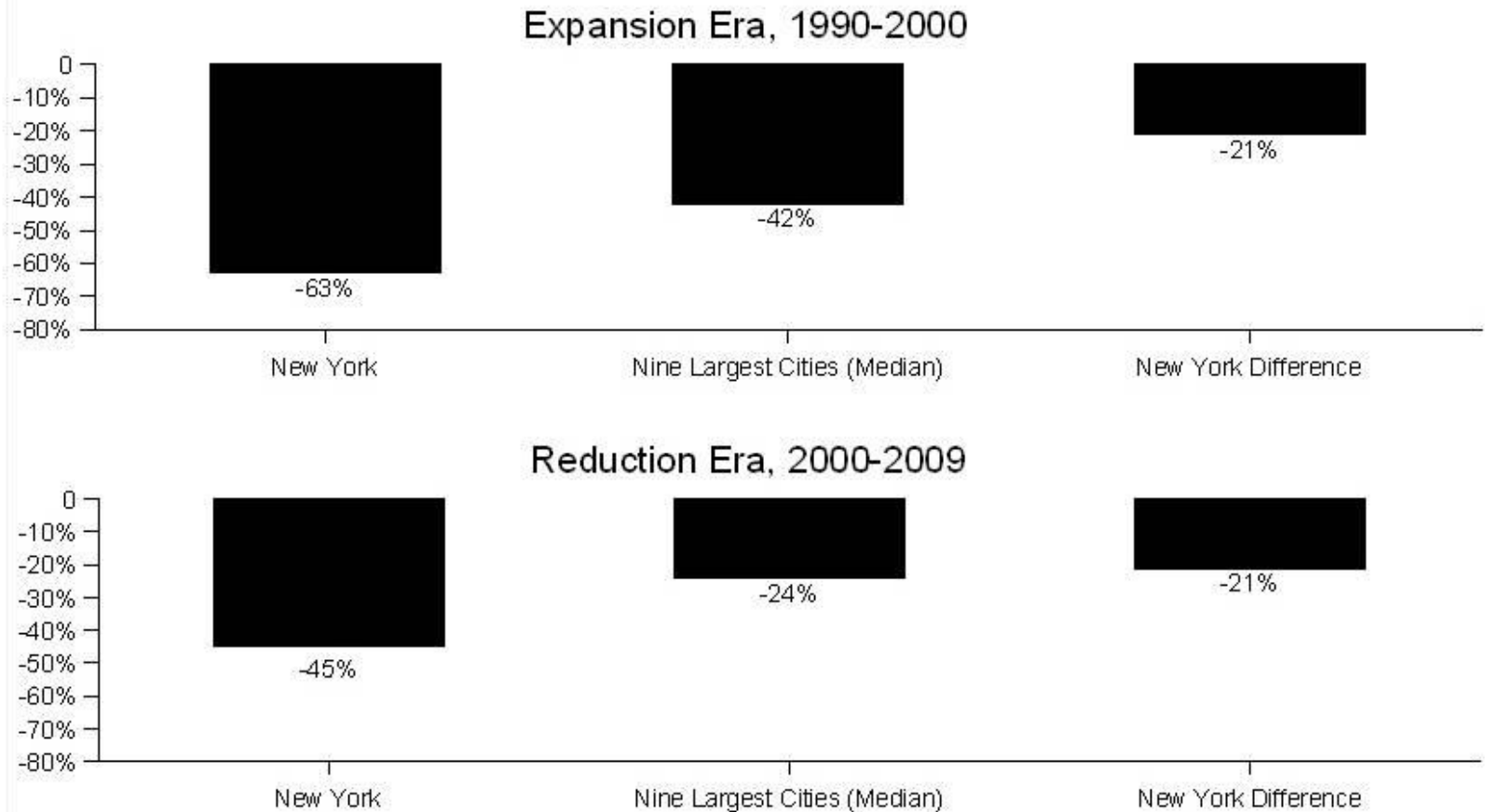


Figure 7. Estimated Police Crime Reduction in New York, 1990-2009.



Source: New York Police Department.

Figure 5.18. Crime Changes in Percentage in New York and other Large U.S. Cities in Two Time Periods.



Note: Expansion and reduction in staff per 100,000 population.

Source: FBI, *Uniform Crime Reports*.

Figure 9. What Worked in New York City Policing?

Effective	Hot Spots Destruction of Public Drug Markets
Probably Effective	Increased Manpower COMPSTAT Management and Mapping Gun Programs
Not Known	Aggressive Arrests and Stops
Not Implemented in New York	"Zero Tolerance" "Broken Windows"



Figure 5, Trends in Incarceration In Adults, New York City and the United States

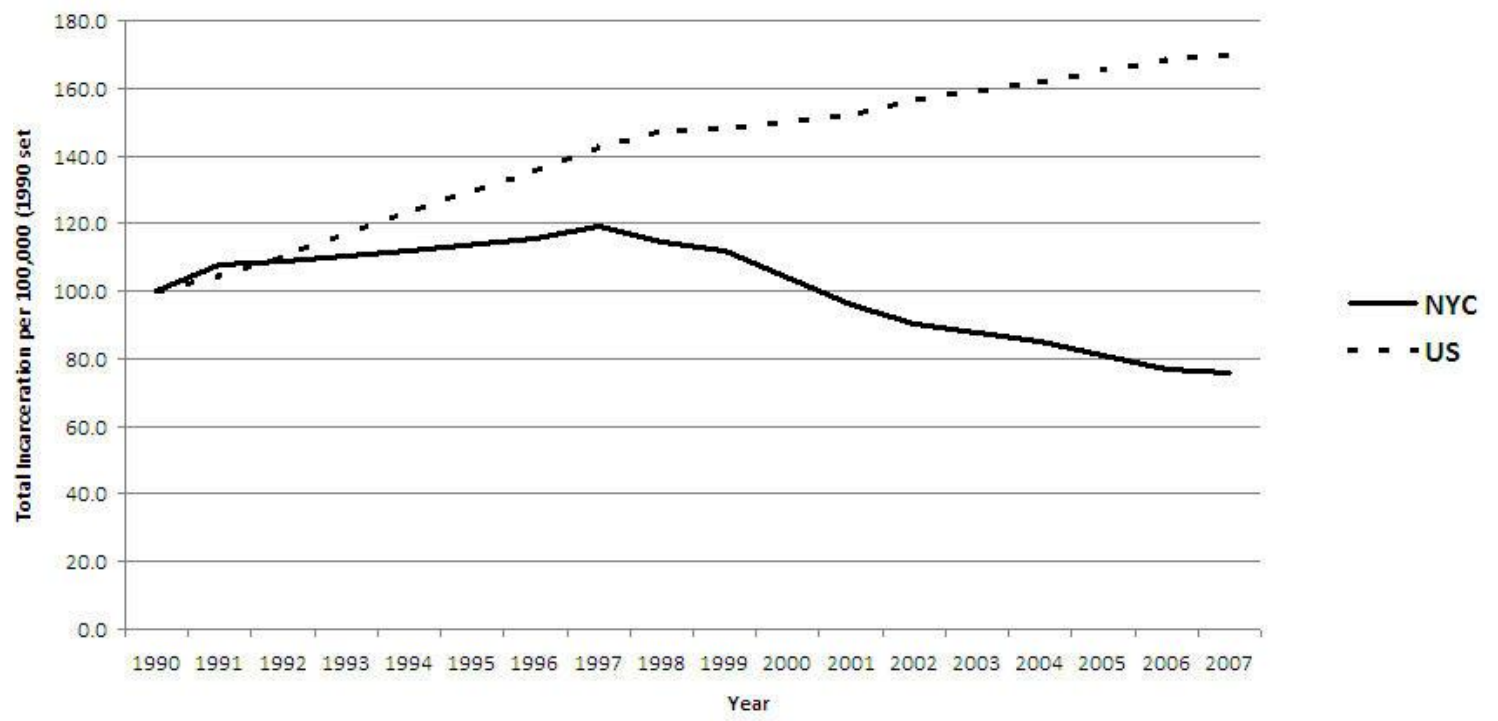
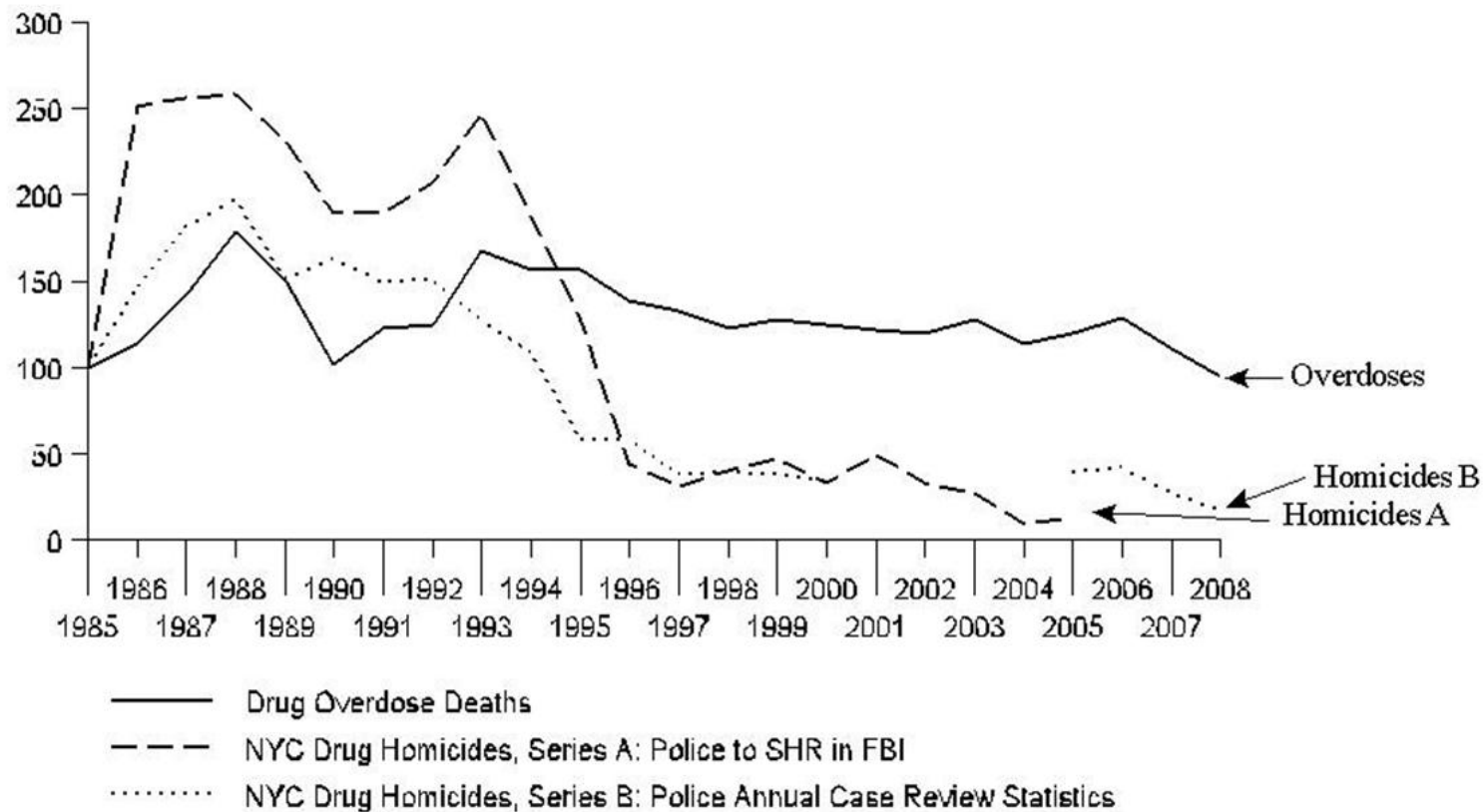


Figure 4.3. Trends in Drug Overdose Deaths and Drug-Related Homicides, New York City, 1985-2008.

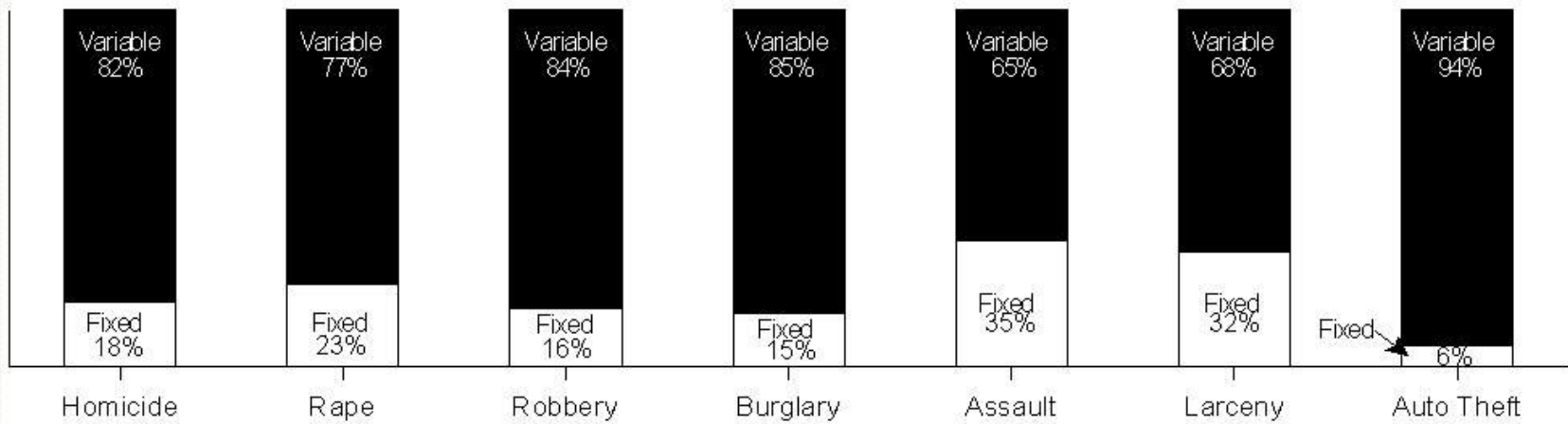


Sources: New York City Police Department (killings); Bureau of Vital Statistics, New York City Department of Health and Mental Hygiene (overdose deaths).

[2005 is down 7% of 1990 rate; 9% of peak rate; 10% of 1990]



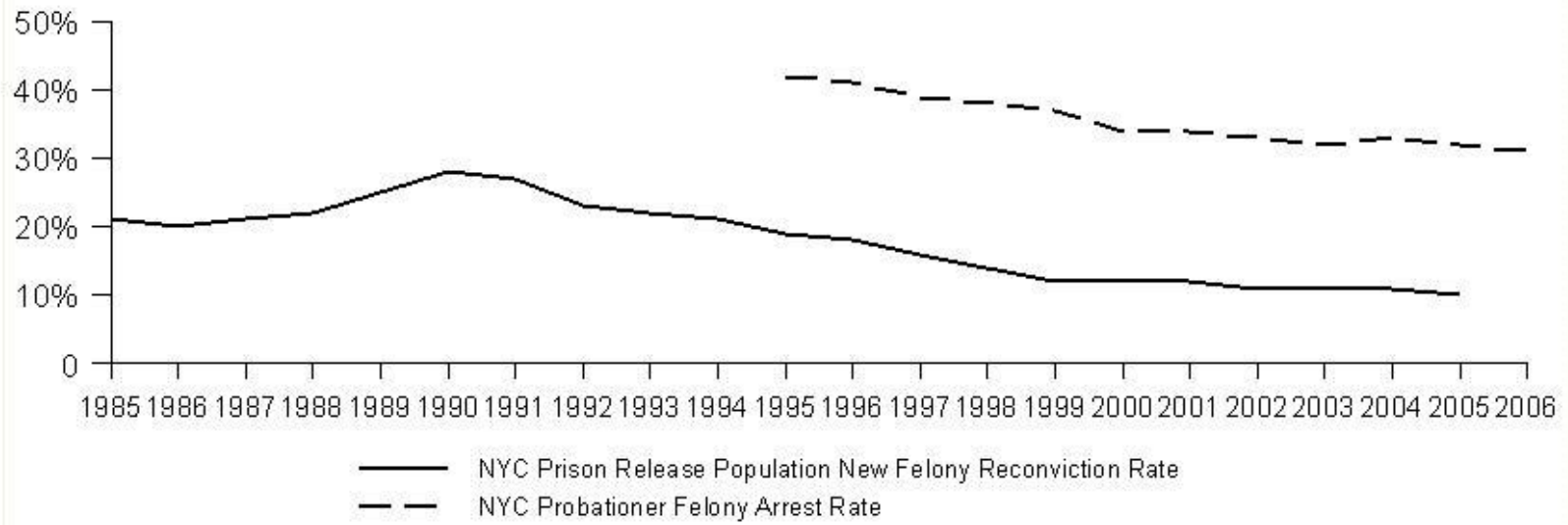
Figure 8.2.



Source: New York Police Department



Figure 6. Measures of Individual Criminal Recidivism in New York City, Three Years after Prison Release or Being Placed on Felony Probation.



Source: State of New York Department of Correctional Services; Division of Criminal Justice Services, Computerized Criminal History Mirror File (7/10).